



Corpus Christi Chatter

13-21 Widford Street, Glenroy, 3046

Telephone: 9306 3062

Fax: 9306 2227

Email: principal@ccglenroy.catholic.edu.au

Chatter No. 5 Friday 5th June 2020

Dear Families and Friends,

Once again a big thank to all families and staff for your wonderful support and outstanding efforts during this term's remote and flexible learning.

Thank you to all F-2 families for a successful transition to on-site learning. Your cooperation with drop - offs and staggered dismissal has been fantastic. Great effort! Thanks to Nash Yako (Antonio & Alana), Tina Butterworth (Anthony) and Keely D'Elton for sourcing sanitising and cleaning products and Annie Kong (Evelyn & Nathaniel) for supplying face masks. Much appreciated.

We look forward to welcoming back our Year 3-4 and Year 5-6 students to onsite learning this coming Tuesday 9th June.

Please ensure you familiarise yourselves with the

RETURN TO SCHOOL ARRANGEMENTS on page 2 & 3.

HEALTH REQUIREMENTS

If a child or staff member presents at school with a HIGH TEMPERATURE and/or displaying cold or flu like symptoms (sore throat, runny nose, cough, breathing difficulties) they will be **excluded from attending school until they receive a doctor's clearance.**

If one member of the family household (parents, children or grandparents) is unwell, then all siblings are required to stay home until a medical clearance obtained. Your cooperation in this matter is vital to ensuring a safe learning environment. Thank you.



CONGRATULATIONS

Congratulations to Mrs Emma Hinss (Literacy Leader) and husband Liam on the birth of their first child, a daughter, Zaedie Blume. May Zaedie Blume bring much joy and happiness to Emma, Liam and extended family.

GET WELL

We extend a Get Well message to Mrs Baan Petros (Learning Support Officer) who is currently recovering from recent shoulder surgery. We wish Baan a speedy recovery.

PARENT TEACHER SCHOOL CLOSURE (MONDAY 22nd JUNE)

A mid-year Semester One Overview of intended learning outcomes and comment on Personal Learning will be issued as part of our mid year reporting. Due to the COVID-19 extended period of remote learning our mid year reporting will take on a very different format this year.

Parents /guardians will be invited to an individual online google meet with classroom teachers to be held on MONDAY 22nd JUNE (SCHOOL CLOSURE DAY) to discuss how children have engaged in learning prior to remote learning, how they have coped with an extended period of remote learning.

This is an opportunity for parents to reflect, share and discuss their observations and give feedback.

Details to follow shortly.

END OF TERM ONE ARRANGEMENTS

Term TWO will conclude on Friday 26th June at 12.30pm. A note will be sent home shortly for parents to indicate how your child/children will be collected on the last day (eg collected, walk, ride home). Thank you.

TERM TWO

Monday 8th June

**Queens Birthday
(Public Holiday)**

Friday 26th June

**12.30pm Dismissal
End of Term**

Monday 22nd June

**School Closure Day
ONLINE Parent-Teacher
Meetings**

TERM FOUR

SCHOOL PHOTOS

Wednesday 28th October

YEAR 3-6 RETURN TO SCHOOL ARRANGEMENTS

TUESDAY 9th JUNE

In the **second stage** of our return to onsite schooling, Years 3-4, 5-6, return to school on **Tuesday 9 June**.

Once a year level has returned, all students will be expected to attend school as normal. This means if you choose to keep your child/children home after their year level has returned to onsite schooling, we can no longer support their learning from home.

Year 3-6 RETURN TO SCHOOL ARRANGEMENTS

PLEASE discuss safe hygiene practices (hand sanitising, washing hands, physical distancing, no touching other people's property, etc.) with your child before we resume onsite learning.

All loan devices (chrome books, lap tops, iPad) must be returned between 8.30am-9.00am by Year 3/4 and 5/6 parents to Hall (Enter via staff Melbourne Ave Staff Carpark gate door) on Tuesday 9th June.

We request parents are punctual with daily drop off between 8.30am and 8.55am (even on Wednesdays until the end of Term 2) and at designated staggered pickup time (either 3.10 or 3.30pm) at designated gates (see next page).

Please do not be late to assist us with orderly and safe dismissal.

Alternatively, children need to be enrolled in EXTEND OUTER Hours Care. (FREE until end of July)

Gates will open at 8.30am daily.

Children **ARE NOT to be left unaccompanied** outside school gates before 8.30am.

If children need to be dropped off before 8.30am they **MUST** register and book into

EXTEND Before School Care.

ALL children are required to **bring a personal Water Bottle** (clearly labelled) as drinking taps are not available due to hygiene requirements.

Personal pencil case, pencils, textas, pens, rubber, sharpeners are needed as children will be unable to share stationery.

All children and staff will be temperature tested before entering school grounds. If a child or staff member registers a HIGH TEMPERATURE and/or displaying cold or flu like symptoms (sore throat, runny nose, cough, breathing difficulties) they will be excluded from attending school until they receive a doctor's clearance.

If one member of the family household (parents, grandparents or children) is unwell, then all siblings are required to stay home.

It is extremely important parents or emergency contacts are readily available and contactable in the event that children need to be sent home. **Phone numbers need to be current. Please update.**

Adults other than staff or contractors will not be permitted onsite. i.e. **NO classroom helpers, NO Canteen (CLOSED until end of TERM 2), NO Uniform Shop.**

Please follow physical distancing guides when waiting for children to be collected along Cromwell St and Melbourne Ave (X marks the spot!)

There will be NO borrowing of Library books.

Children will not be able to use playground equipment.

We request no pick up of students at break times (11:00 -11:30 and 1:00-2:00). Please advise Office/ Classroom teacher if you your child is to be collected early for an appointment.

Our primary goal is to provide a safe and hygienic learning space for all members of our Corpus Christi Community (children, staff and families). Thank you.

	Drop off gate	Pick up time and gate
Families A-D	Gate A	Gate A 3:10 pm
Foundation students and siblings	Gate B	Gate B 3:10 pm
Families E-I	Gate C	Gate C 3:10 pm
Families J-M	Gate A	Gate A 3:30 pm
Families N-R	Gate B	Gate B 3:30 pm
Families S-Z	Gate C	Gate C 3:30 pm

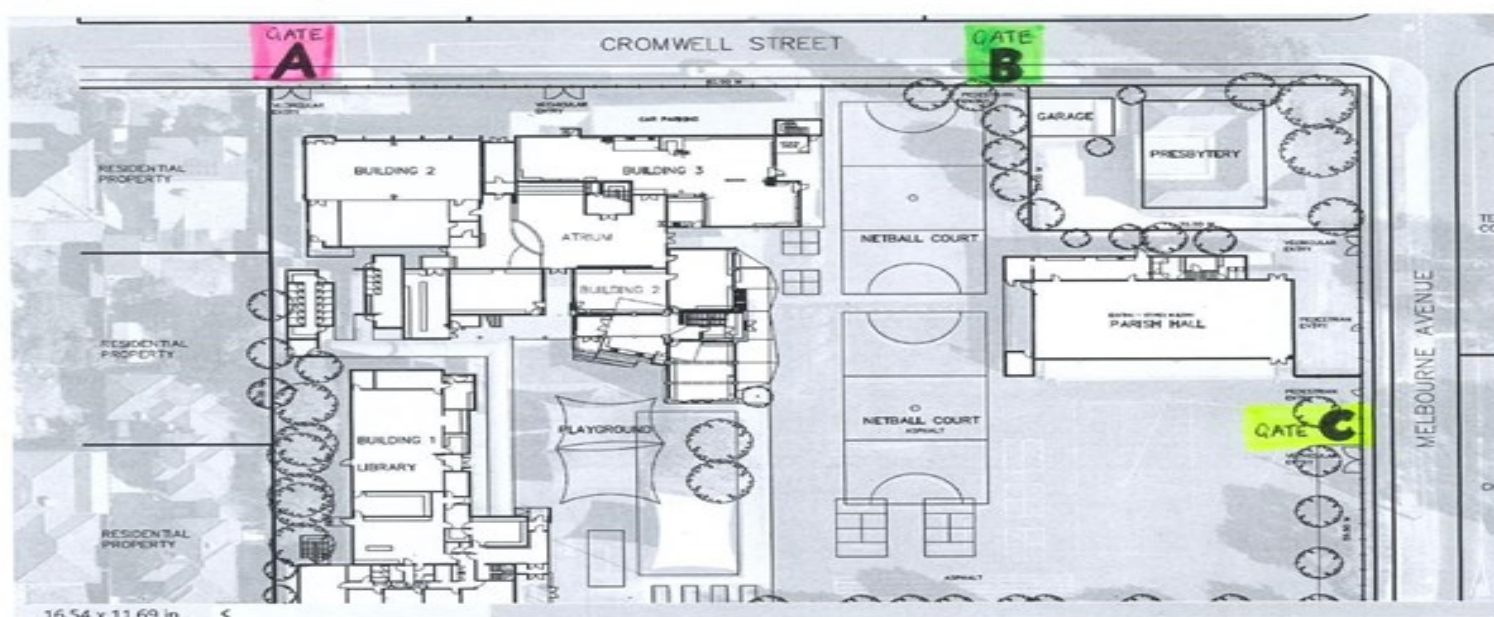
Gate A-Cromwell Street Gate near the Children's Crossing

Gate B-Cromwell Street Gate near the Parish House

Gate C-Melbourne Ave Gate

PLEASE NOTE: Widford Street Gate will NOT be used as a pick up or drop off point.

Students' temperatures will be measured as they arrive at school. If they have a high temperature, they (and any siblings) will be sent home with the parent.



TERM THREE FEES

I wish to advise that Catholic Education Melbourne requires our School Administration to convert to a new Finance and Administration Software System (ICON). Our current Administration Software System is closed down until end of Term 2 .

We will be unable to manually process CASH payments of FEES until Term 3.

We can still process Electronic Funds Transfers (EFT) to receive fees.

Fee accounts will be sent out at the start of Term 3. **If you have been adversely affected financially by COVID -19 please contact Mr Lucardie once you receive your fees account to discuss your current situation.**

EFT DETAILS

NAME

Corpus Christi Primary School

BSB

083 347

ACC NUMBER

65080 2275

BANK

National Australia Bank

REFERENCE

Child's Name / Class for matching to correct family

Gratitude is the
best medicine.
It heals your mind,
your body
and your spirit.
And attracts
more things to be
grateful for.

Live Purposefully Now

It is not always easy to be grateful and give thanks in challenging circumstances.

But when we choose to thank God in the midst of difficulty, it overcomes a sense of darkness that overwhelms us. When we thank God for every gift He has given us even when things are hard, hopelessness and despair lose their hold over us.

Lord, teach me to offer you a heart of thanksgiving and praise in all my daily experiences of life. Teach me to be joyful always, to pray continually and to give thanks in all my circumstances. AMEN

2020 Sacramental Dates

EUCCHARIST (YEAR 4)

The Sacrament of Eucharist (First Communion) for Year 4's will be held on

Sunday 25th October at 10am Mass.
Eucharist Parent Meeting: TBA



PENANCE (RECONCILIATION)



Father Giang has advised the Sacrament Of Penance (Reconciliation) will now be held in Year 3-4 from 2021. This means Year 3 children 2020 will have both Reconciliation and Eucharist in 2021.

CONFIRMATION

**CONFIRMATION is held bi-annually
in Year 5-6.**

**Confirmation celebration will be this year on
Friday 13 November 2020.**



“NO SHOW-LET US KNOW!”

If your child is absent from school we request you inform our School Office of their non-attendance by **9.00am** on the day of absence using the following methods

Email Child's name and class to:

away@ccglenroy.catholic.edu.au

OR

Contact School Office 9306 3062 / 9306 3322

If your child is marked as absent on the daily roll and we have not been notified, we will contact families to ensure that children are still at home. Your assistance will ensure we don't need to make time consuming or unnecessary phone calls.

Children arriving after 9.00am must report to the School Office to obtain a late pass and have their attendance adjusted from absent to present.

Thank you for your continued support and assistance.

PLEASE ensure all current contact details are up to date.

**Home address, Email addresses, Home Phone Number, Work Phone Numbers,
Mobile Phone Numbers**



CANTEEN

Currently closed until end of Term 2 due to Covid-19 restrictions.
Will keep you updated as to possible reopening.

REMINDER “Runners” are not part of our daily school uniform.
**Black school shoes should be worn on non-sports days. Please ensure
your child has correct black shoes.**

If your child is out of school uniform a note is required.

Leggings /leisure wear are NOT part of our girl's school uniform.

Sports shorts, netball skirts or tracksuits are worn.



ROAD SAFETY

Children should always enter the car from the **safety of the curb using the passenger side door**. Children should not walk onto the road to enter the car. Please ensure that children wear seatbelts at all times.

**PLEASE do not DOUBLE Park
when collecting or dropping off children.**

A reminder to parents that parents and children should use the crossing in Cromwell St rather than walk out from between parked cars. Your cooperation is greatly appreciated.

Your assistance in ensuring your children follow correct safety procedures will help avoid a serious or even fatal accident.

REMEMBER OUR CHILDREN ARE OUR MOST PRECIOUS GIFT.



SEVERE FOOD ALLERGIES

We have a number of children who have life threatening food allergies. We ask all parents to **discuss with their children correct disposal of uneaten lunches, not to share food with other children and to practise good hygiene habits** (ie. washing hands before and after eating).

COMMUNICATION

Our school newsletter, “**The Corpus Christi Chatter**” is distributed via email on a fortnightly basis. Please read the “Chatter” to ensure you are aware of school happenings and events. If you are not receiving your “Chatter” please contact the Office to ensure we have correct email details. Please regularly check school bags for notes.

To access the Chatter online go to :

www.ccglenroy.catholic.edu.au

click **News and Events**

click **Download current newsletter (in red)**



Penola Catholic College

Enrolments for Year 7 in 2022
are now open

Applications close Friday 21st August 2020

Apply now

Limited enrolment places are still available
for some year levels in 2021.



www.penola.vic.edu.au

YEAR SEVEN 2022 ENROLMENT CLOSING DATE (Year 5 students)

Year 5 children enrolling for Year 7 Catholic Secondary School (eg Penola Catholic College in 2022) must have enrolment forms returned to their relevant secondary school by **Friday 21 August 2020.**

RECESS & LUNCH TIME PICK UP

If you need to pick your child up between **11.00am—11.30am** or **1.00pm—2.00pm** for an appointment or family matter could you please do so before or after these times as children are difficult to locate in the yard and classrooms are locked and bags are inaccessible.

CHILDREN'S MOBILE PHONES/SMART WATCHES

We understand the need for parents and children to contact each other before or after school hours in emergency situations.

We request that if children require a **mobile phone/smart watch** at school that **Mr Lucardie** be advised in writing and that the **children check the phone** (clearly labelled with their name and class) in at the School Office for safe keeping.

Phones/smart watches should not be worn or kept in school bags or classrooms as they can be lost, damaged or stolen.

Children are not permitted to use mobile phones/smart phones to make or receive phone call during school hours.

Some children have been found playing with them at recess and lunchtime.

Children should be made aware that they must be responsible in using their phones/smart watches at all time.

2020 Extend BEFORE and After School Care

ONLINE BOOKINGS: extend.com.au **CALL OUR OFFICE:** 1300 366 437

Enrol online – allow 24 hours

Enrolling is quick and easy! Simply set up your own account online via the Parent Portal. Please note it is government regulation that all children must be enrolled BEFORE attending an Extend service. For information on operating hours and fees for your school, visit your After School Care venue or school website.

Enrol now, pay later

The annual enrolment fee per family of \$20 is NOT payable until you first use the service. So why not enrol now so you can access the service later? It doesn't matter if you don't end up using the service, because you won't be charged.

support@extend.com.au



STEPHEN LUCARDIE
PRINCIPAL

Stephen Lucardie



2020 TERM DATES

TERM 1 -

Wednesday 29th January–Friday 27th March

TERM 2 -

Tuesday 14th April–Friday 26 June

TERM 3 -

Monday 13th July–Friday 18 September

TERM 4 -

Monday 5th October–Friday 18th December