



## Corpus Christi Chatter

13-21 Widford Street, Glenroy, 3046

Telephone: 9306 3062

Fax: 9306 2227

Email: [principal@ccglenroy.catholic.edu.au](mailto:principal@ccglenroy.catholic.edu.au)

**Chatter No. 9 Friday 18th June 2021**

Dear Families and Friends,

It's hard to believe we have reached the end of Term 2!!

Thank you once again for your positive attitude and support, especially throughout the recent COVID lockdown.

Greatly appreciated!

### **SCHOOL PHONE NUMBER (8383 9661)**

**Our school phone system has finally transferred to NBN. Our existing numbers still function (i.e 9306 3062/9306 3322).**

**A third phone option is now 8383 9661 which may appear as an incoming call number. Thank you for your patience.**

### **MID YEAR PARENT TEACHER MEETINGS ONLINE**

**Due to current COVID limitations to onsite visitors, we have reverted to Online Meetings for our Mid Year Parent Teacher meetings to be held on Monday 21st June.**

**Reminder this is a Pupil free Day. (NO school for children)**

### **WELCOME BACK**

We welcome back Mrs Emma Hinss from Parental Leave. Emma will join our Foundation/One team working with Mrs Vanessa in F/1VL allowing Mrs Lia to focus on our New Arrivals-Refugee program.

### **PARENTAL LEAVE**

Mrs Jessica Giovannia (Learning Support Officer) has commenced Parental Leave in preparation for the birth of her second child. We wish Jessica, Nuri and Melody all the best.

### **LONG SERVICE LEAVE**

Mrs Michelle Smith (MS) will be undertaking Long Service Leave as of Monday 21st June until Friday 16th July. We wish Michelle a well earned rest.

### **CONDOLENCES**

**We express our deepest sympathies to Ashika Purohit (4/5) and Family on the sad passing of Ashika's Great Grandmother overseas. Please keep Ashika and Family in your thoughts and prayers during these sad times.**

**Condolences to Lasksh (4/5) and Suyanash (F/1) Vanaparthi and Family on the sad passing of their Grandmother overseas. In our thoughts and prayers.**

### **SACRAMENT OF PENANCE (RECONCILIATION) AND EUCHARIST (YEAR 4/5)**

Unfortunately the Sacrament of Penance (Reconciliation) and Sacrament of Eucharist (First Communion) have been postponed due to COVID lockdown and restrictions. We are waiting on advice from Fr Giang as to when the Sacraments will be rescheduled. Thank you for your patience and understanding.

### **END OF TERM 2 ARRANGEMENTS**

The school term will **conclude on Friday 25th<sup>th</sup> June 2021**. Children can be collected from their classrooms at **12.30pm**.

Please complete the Return Slip and return to your child's class teacher by **Tuesday 22nd June 2021** indicating how your child will travel home on the last day of term. Parent authorisation must be granted if children are **WALKING** or **RIDING** their bike home after 12.30pm.

Parents with difficulties collecting their children are able to **use EXTEND After Care** at 12.30pm if their child is registered. If not registered, families can obtain a registration form **ONLINE** at **[extend.com.au](http://extend.com.au)** and register as soon as possible.

**Term Three commences at 8.50am on Monday 12th<sup>th</sup> July 2021.**

### **CANTEEN to REOPEN**

**Wednesday 14th July 2021**

### **TERM TWO**

**Monday 21st June**

**Mid Year Parent Teacher meetings  
(School Closure Day)**

**Tuesday 22nd June**

**Parents Association SUSHI DAY.**

**Order online (see page 2)**

**Friday 25th June**

**12.30pm End of Term**

Penola CC Enrolments for Year 7 in 2023 are now open.

Applications close on the 20<sup>th</sup> August 2021.

Corpus Christi Primary School

Tuesday 22nd June

# Sushi Day!

Order a fresh and delicious lunch and help raise funds for our school!

## \$6 TWIN PACKS

(2 rolls of the same type)

### - HANDROLLS -

**Crispy Chicken** DF

**Tuna** GF DF

**Vegetable** V GF DF EF

**California** DF

**Smoked Salmon** GF DF EF

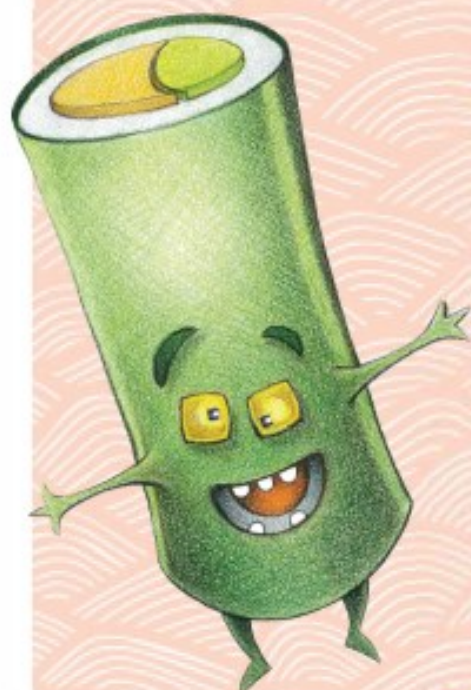
**Prawn** GF DF

**SOY SAUCE INCLUDED**

### - RICE PAPER ROLLS -

**Chicken** GF DF EF

**Prawn** GF DF EF



Order online: [www.sushi.net.au](http://www.sushi.net.au)

Orders must be placed by 10am Monday 21st June. Sorry no late orders accepted.



**sushi@school**

[www.sushi.net.au](http://www.sushi.net.au)





**2021 Sacramental Dates**  
**EUCHARIST (YEAR 4 & 5)**



Unfortunately the Sacrament of Penance (Reconciliation) and the Sacrament of Eucharist (First Communion) have been postponed due to COVID lockdown and restrictions. We are waiting on advice from Fr Giang and the Archdiocese of Melbourne as to when the Sacraments will be rescheduled.

Thank you for your patience and understanding.

## 2021 FEES

### 2021 Tuition Fees:

**Preferred payment by EFT (Electronic Funds Transfer).**

Thank you for your patience and understanding.

Families who have had payment arrangements in previous years or experiencing financial difficulties are reminded that they must still contact the School Office to review or re-validate their arrangements.

**Tuition      \$340 per child      Family Fee    \$ 850 per family**

**Healthcare Card holders are eligible to apply for the CSEF allowance (currently \$125) which is deducted from the Tuition Fee. We will structure our payment schedule to enable families to budget for fee payments.**

## ROAD SAFETY

Children should always enter the car from the **safety of the curb using the passenger side**. Children should not walk onto the road to enter the car. Please ensure that children wear seat-belts at all times.



**door.**  
**seat-**

**PLEASE do not DOUBLE Park when collecting or dropping off children.**

A reminder to parents that parents and children should use the crossing in Cromwell St rather than walk out from between parked cars. Your cooperation is greatly appreciated.

Your assistance in ensuring your children follow correct safety procedures will help avoid a serious or even fatal accident.

### ***REMEMBER OUR CHILDREN ARE OUR MOST PRECIOUS GIFT.***

**Thank you to all families for your cooperation with using the Cromwell St crossing or crossing at the corner of Melbourne Ave and Cromwell St.  
Much appreciated.**

**MORELAND Council Parking Officers will patrol the area around our school issuing Parking Infringement notices.**

### **SEVERE FOOD ALLERGIES**

We have a number of children who have life threatening food allergies. We ask all parents to **discuss with their children correct disposal of uneaten lunches, not to share food with other children and to practise good hygiene habits** (ie. washing hands before and after eating).

### **YEAR SEVEN 2023 ENROLMENT CLOSING DATE (Year 5 students)**

Year 5 children enrolling for Year 7 Catholic Secondary School (eg Penola Catholic College in 2023) must have enrolment forms returned to their relevant secondary school by **Friday 20th August 2021.**

# **“NO SHOW-LET US KNOW!”**

In light of Victorian Government attendance guideline requirements, following an incident at a school late 2017, of a child hiding in their parent's car all day, unbeknown to the parent, resulting in serious heat related injuries, we are continuing our current practice of contacting parents to ensure the safe arrival at school of all children, especially those children who walk or ride to school without adult supervision.

If your child is absent from school we request you inform our School Office of their non-attendance by **9.00am** on the day of absence using the following methods

Email Child's name and class to:

**[away@ccglenroy.catholic.edu.au](mailto:away@ccglenroy.catholic.edu.au)**

OR

**Contact School Office 9306 3062 / 9306 3322**

If your child is marked as absent on the daily roll and we have not been notified, we will contact families to ensure that children are still at home. Your assistance will ensure we don't need to make time consuming or unnecessary phone calls.

**Children arriving after 9.00am must report to the School Office to obtain a late pass and have their attendance adjusted from absent to present.**

**Thank you for your continued support and assistance.**

**PLEASE ensure all current contact details are up to date.**

**Home address,**

**Email addresses,**

**Home Phone Number,**

**Work Phone Numbers,**

**Mobile Phone Numbers**

# CORPUS CHRISTI PARENTS ASSOCIATION MEETING

The Parents' Association plays an important role in providing social, fundraising and recreational activities for our school. Without the Parents' Association annual contribution to our budget, an increase in school fees could result to cover the financial shortfall.

Thank you to our wonderful Parents' Association for your tireless efforts.  
Much appreciated.

**Next Meeting To Be Advised      Interested parents welcome.**

Planning social and fundraising activities for 2021 under COVID guidelines  
Hope to see new and familiar faces at the next meeting. Thank you.

## **Uniform Shop will be open this Wednesday 23rd June**

Our Parents' Association Uniform Shop will be open **Wednesdays (8.45am-9.15am) and Friday (3.15pm-3.45pm) only. Located in Uniform Shop near Atrium Entrance from the Big Yard.** Please ensure your child is in correct uniform at all times. Runners should only be worn on your child's sports day unless otherwise notified. If your child is out of uniform a note explaining the reason would be appreciated.

Please ensure ALL items of clothing and personal belongings are clearly labelled.

Lost property will be situated inside the Atrium.

**REMINDER “Runners” are not part of our daily school uniform.**

Black school shoes should be worn on non-sports days.

Please ensure your child has correct black shoes.

If your child is out of school uniform a note is required.

**Leggings /leisure wear are NOT part of our girl's school uniform.**

**Sports shorts, netball skirts or tracksuits are worn.**

## **Canteen currently CLOSED**

**Canteen will reopen Week One of Term Three.**

**Wednesday 14th July and Friday 16th July .**

**NO Lunch Orders on Wednesday 23rd June or Friday 25th June**

Volunteers will be needed to assist with the Canteen now it has reopened. If you have any spare time or can help on a regular basis please let Mr Lucardie know (Working With Children's' Check required) and drop into the Canteen and meet Tien to organise a time to help.



## COMMUNICATION

Our school newsletter, “The Corpus Christi Chatter” is distributed via email on a fortnightly basis. Please read the “Chatter” to ensure you are aware of school happenings and events. If you are not receiving your “Chatter” please contact the Office to ensure we have correct email details.

Please regularly check school bags for notes.

*To access the Chatter online go to :*

**[www.ccglenroy.catholic.edu.au](http://www.ccglenroy.catholic.edu.au)**

**click    *News and Events***

**click    *Download current newsletter (in red)***



## WORKING WITH CHILDREN CHECKS

If you work or volunteer with children you will need to apply for a WWC Check. Employers, volunteer organisations and agencies must ensure that any of their staff or volunteers who need a WWC Check have applied by the due date. **This legislation requires we apply for a “Working With Children Check” for all non-teaching staff and all parent helpers (Eg. Canteen, Uniform Shop, Parents’ Association, Classroom Helpers, Swimming Program and Sports programs).**

**All volunteers are able to apply for a FREE Working With Children Check  
Please see Mr Lucardie to obtain relevant information. Thank you.**

## SECURITY — FENCE

We request that **parents do not talk to their children from outside our boundary fence as we are trying to educate our children not to talk to passer-bys outside the fence.** If parents wish to talk to their children they are most welcome to sign in via the Office. All visitors to our school are required to obtain a Visitors Pass from the Administration Office. Parents working in the classrooms, attending excursions, volunteering in Canteen and Uniform Shop must have a Working with Children Check Card which must be displayed in the Visitors Pass.

### AFTER SCHOOL

**Children waiting for collection after school must wait inside the school grounds so supervision can be provided. At 3.45pm all children must proceed to the Office area to await collection.**

**If children are walking home they should not linger in the playground but depart immediately and walk directly home.**

**Children should not be at school prior to 8.30am when Yard Supervision commences.**

**With AFTER SCHOOL CARE we will be requesting families to enrol in AFTER School Care if at school past 3.45pm.**

**Your cooperation is greatly appreciated.**

**If parents have any concerns please feel free to contact Mr Lucardie.**

## RECESS & LUNCH TIME PICK UP

If you need to pick your child up between **11.00am—11.30am or 1.00pm—2.00pm** for an appointment or family matter could you please do so before or after these times as children are difficult to locate in the yard and classrooms are locked and bags are inaccessible.

## SKATEBOARDS/BIKES/SCOOTERS

A number of children use skateboards, scooters or bikes to travel to school. We request skateboard/scooter, bike users wear a helmet and appropriate safety gear (eg knee pads/elbow/wrist supports).

**Children should not ride their skateboards /scooters or bikes in our school grounds.**

## PLAYGROUND EQUIPMENT

For safety and supervision reasons, children **are not permitted to play on the playground equipment before or after school**. Your support and cooperation is greatly appreciated.

## ABSENT NOTES

It is a requirement that if a child is absent for any reason, a note should be sent to the child's class teacher explaining the reason for their absence. These notes are retained on file for legal requirements.

## VALUABLE ITEMS

A reminder that children should not bring valuable items (monetary or sentimental value) to school as items may be damaged, misplaced, lost or taken.

## CHILDREN'S MOBILE PHONES/SMART WATCHES

We understand the need for parents and children to contact each other before or after school hours in emergency situations.

We request that if children require a **mobile phone/smart watch at school that Mr Lucardie be advised in writing and that the children check the phone (clearly labelled with their name and class) in at the School Office for safe keeping.**

Phones/smart watches should not be worn or kept in school bags or classrooms as they can be lost, damaged or stolen.

Children are not permitted to use mobile phones/smart phones to make or receive phone call during school hours.

Some children have been found playing with them at recess and lunchtime.

Children should be made aware that they must be responsible in using their phones/smart watches at all times.

## 2021 After School/Before School Care

ONLINE BOOKINGS: [extend.com.au](http://extend.com.au) CALL OUR OFFICE: 1300 366 437

### Welcome back to Before School Care!

We are looking forward to seeing lots of familiar faces at **After School Care** and **Before School Care** and to welcoming lots of new faces as well. Please pop in and say Hi!

Extend OSHC at Corpus Christi Primary School  
New Families – Enrol in **BEFORE /AFTER SCHOOL CARE**



### Enrol online – allow 24 hours

Enrolling is quick and easy! Simply set up your own account online via the Parent Portal. Please note it is government regulation that all children must be enrolled BEFORE attending an Extend service. For information on operating hours and fees for your school, visit your After School Care venue or school website.

### Enrol now, pay later

The annual enrolment fee per family of \$20 is NOT payable until you first use the service. So why not enrol now so you can access the service later? It doesn't matter if you don't end up using the service, because you won't be charged.

*Watch this space throughout the term for regular updates from our Extend team!*

PARENT PORTAL: [extend.com.au](http://extend.com.au)

STEPHEN LUCARDIE  
PRINCIPAL

*Stephen Lucardie*



### 2012 TERM DATES

#### TERM 2 -

Monday 19th April–Friday 25 June

#### TERM 3 –2

Monday 12th July–Friday 17 September

#### TERM 4 -

Monday 4th October–Friday 17th December



# 2023 Enrolments

'Education today, empowerment tomorrow, a lifelong love of learning'  
Mr Chris Caldwell - Principal

Applications for Year 7 in 2023 are now open.

**20th**  
August  
2021

Applications close.  
Enrolments must be  
received by the College

**22nd**  
October  
2021

Letters of Offer will  
be sent to families

**12th**  
November  
2021

Final date for families to  
accept offer from College

Limited spaces are still available  
for all year levels for 2022,  
don't miss out, apply online now!  
[www.penola.vic.edu.au/enrol-online](http://www.penola.vic.edu.au/enrol-online)



**Penola**  
CATHOLIC COLLEGE  
EST. 1985



## 2021 OPEN DAY

**Tuesday 22<sup>nd</sup> June**  
**2.30pm – 5.30pm**

Take a tour of this "hidden little gem" in Oak Park  
and meet our dedicated team.

**Enrol now for 2022**

\*Limited 4 Year old kinder positions available for 2021\*

**11 Watt Ave, Oak Park**

**Ph: 9306 7466**

**Mobile: 0435 437 466**

**[www.glenoakkindergarten.com.au](http://www.glenoakkindergarten.com.au)**